

RPA AT WORK

FOCUS ON BANKING

CLIENT: A LEADING GLOBAL INVESTMENT BANK
PROCESS TO BE AUTOMATED: TRADE SETTLEMENT

THE CHALLENGE

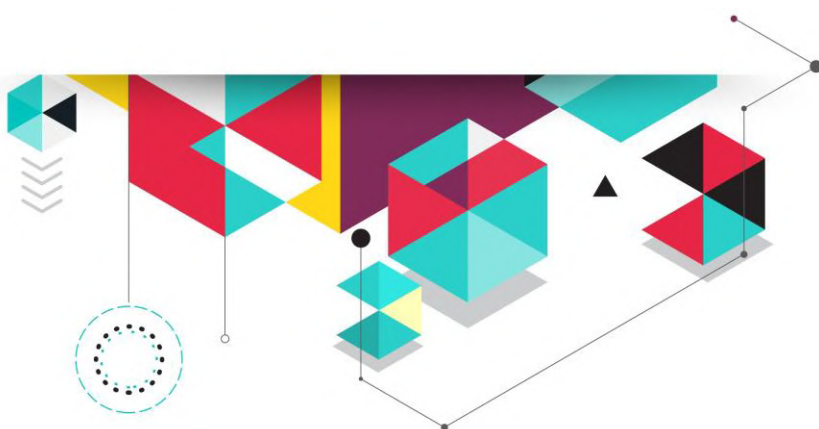
Significant Manual processing, high-propensity to errors & high cost of operation. The specific challenge lay in identifying unmatched and pending trades with the Counter-Party and Custody for various geographical regions. The process required heavy investigation and coordination with multiple units over e-mail.

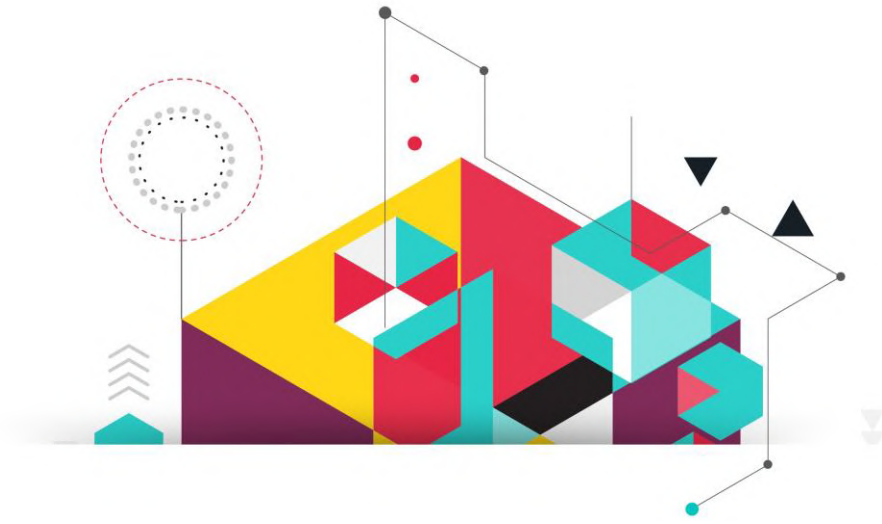
UIPATH SOLUTION

Once the information is received by e-mail, it is instantly downloaded. UiPath Robot then automatically performs validation. It searches for trade details, identifies unmatched and pending trades, and updates the transaction numbers and counterparty details in a spreadsheet, before sending out an e-mail to the Custody and Counter-Party with the update.

CLIENT VALUE DELIVERED

High automation efficiency with zero error rates, improving the quality of processing. The average handling time (AHT) to process trades has since dropped from **40 MINUTES TO 3 MINUTES**, with an expected effort benefit of **444 HOURS PER YEAR**.





About ATC

Born in 2008 during the peak of the crash, the professionalism and forward-thinking of our passionate team has enabled us to grow into an organization well-equipped to lead, support, and optimize our client's IT initiatives.

Using a fully customized mix of onsite consulting, offshore resources, enterprise-grade tools and frameworks, and highly-talented staff placements, we help organizations like yours bridge key knowledge, technology, and process gaps to help you accelerate growth.

When you partner with ATC, we solve problems at every stage of your product development lifecycle, enabling you to focus on your core business while we manage the details of transforming your business and delivering success.

Find out how ATC can help your business today:

<https://www.american-technology.net/robotic-process-automation>

Phone: +1-515-974-5619

Email: hello@american-technology.net

Address 12951 University Avenue, Suite 200 Clive, Iowa 50325.

